



# CMC

## Selection Guide

Since 2000 | 25th Anniversary

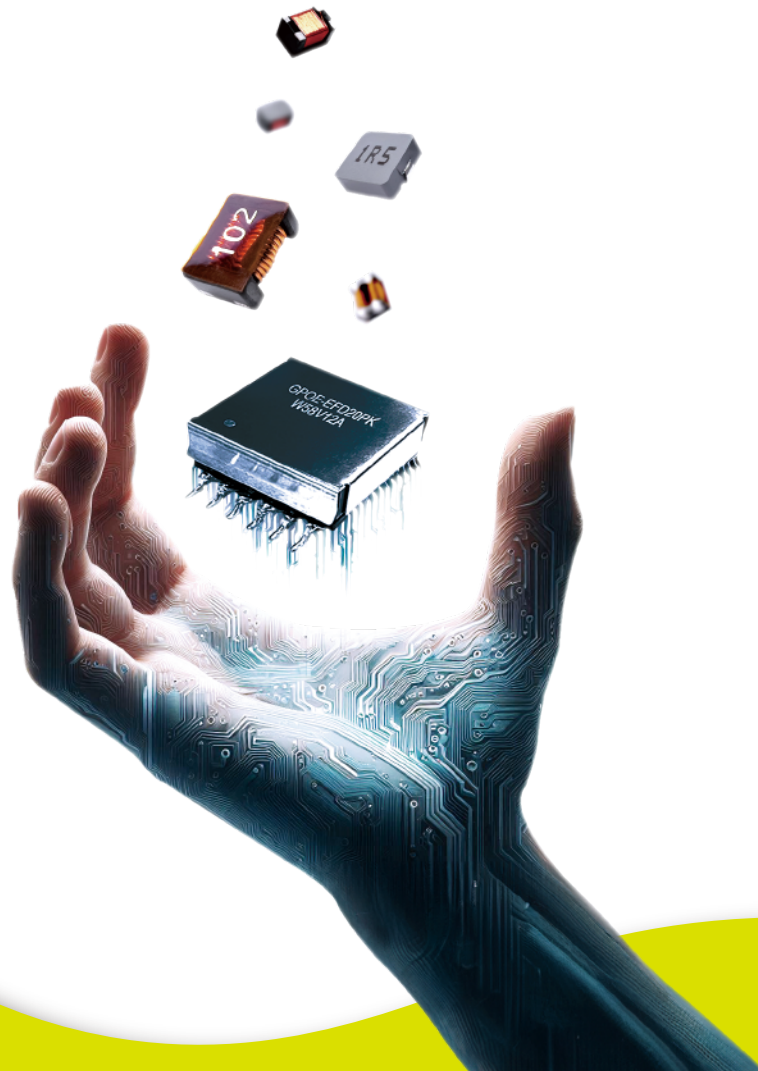
# INDEX

- 01 About GOTREND
- 02 Company Overview
- 03 Locations
- 04 History
- 05 Competitive Edge
- 06 Product Evolution
- 07 Selection Guide - Signal
- 10 Selection Guide - Power
- 16 Custom Product Categories



# About GOTREND

Go Trend、Go Further、Smarter



Founded in 2000, GOTREND Technology Co., Ltd. is a professional magnetic component design company and manufacturer. We provide high-quality magnetic component solutions for both traditional and advanced technological trends across a wide range of application fields, including wireless charging, smart living, industrial automation, medical equipment, telecommunications, and intelligent automotive systems.

GOTREND products are marketed globally, serving diverse application markets such as 3C (consumer electronics), automotive, medical, and aerospace industries. We pride ourselves on exceptional flexibility in custom design, embracing the vision of Go Trend. Go Further. Smarter. Our products meet the highest quality standards, including the IATF 16949 automotive system certification and AEC-Q200 reliability standards.

Over the past 24 years, we have been dedicated to providing superior products and adhering to QCDS principles (Quality, Cost, Delivery, and Service), taking pride in achieving customer satisfaction.

GOTREND Technology Co., Ltd.  
General Manager \_ Robin Tsai

A handwritten signature in black ink, reading 'Robin Tsai'.



# Overview

Founded :	Year 2000
HQ Location :	Zhonghe District, New Taipei City 235, Taiwan
Sales Offices :	Taipei, Taiwan / Guangzhou, China
Plant Sites :	China Guangzhou / Guangxi / Shaanxi / Sichuan / Thailand
Major Products :	Inductor / Filter / Transformer / WPC / 3D Transponder
URL :	<a href="http://www.gotrend.com.tw">www.gotrend.com.tw</a>

# Locations

Go Trend. Go Further. Smarter



## Guangzhou

Dagang Town, Nansha District, Guangzhou, China



IATF 16949

- Automation Development
- Automation : 80%
- Capital : USD 2M
- Facility Area : 6,000 m<sup>2</sup>
- Workforce : 200 employees



Common Mode Choke

Monthly Output  
**50~100KK**



CMC & WPC Coil

Monthly Output  
**5KK**



Assembly SMD Choke

Monthly Output  
**10~20KK**



## Guangxi

Binyang County, Nanning, Guangxi, China



IATF 16949

- Automation : 80%
- Capital : USD 16.7M
- Facility Area : 100,000 m<sup>2</sup>
- Workforce : 2000 employees



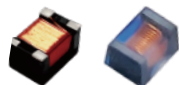
SMD Molding

Monthly Output  
**100~200KK**



Assembly SMD Choke

Monthly Output  
**100~300KK**



SMD WireWound Chip

Monthly Output  
**50~100KK**



## Shaanxi

Zhoujiashan Town, Mian County, Hanzhong, Shaanxi, China



IATF 16949

- Automation : 70%
- Capital : USD 1.37M
- Facility Area : 10,000 m<sup>2</sup>
- Workforce : 500 employees



Assembly SMD Choke

Monthly Output  
**100~300KK**



## Sichuan

Zizhong County, Neijiang City

- Automation : 40%
- Capital : USD 1.3M
- Facility Area : 2,300 m<sup>2</sup>
- Workforce : 110 employees



Assembly Transformer

Monthly Output  
**1~2KK (Est.)**



## Thailand (Coming soon)

Overseas New Plant Construction



### Factory Address

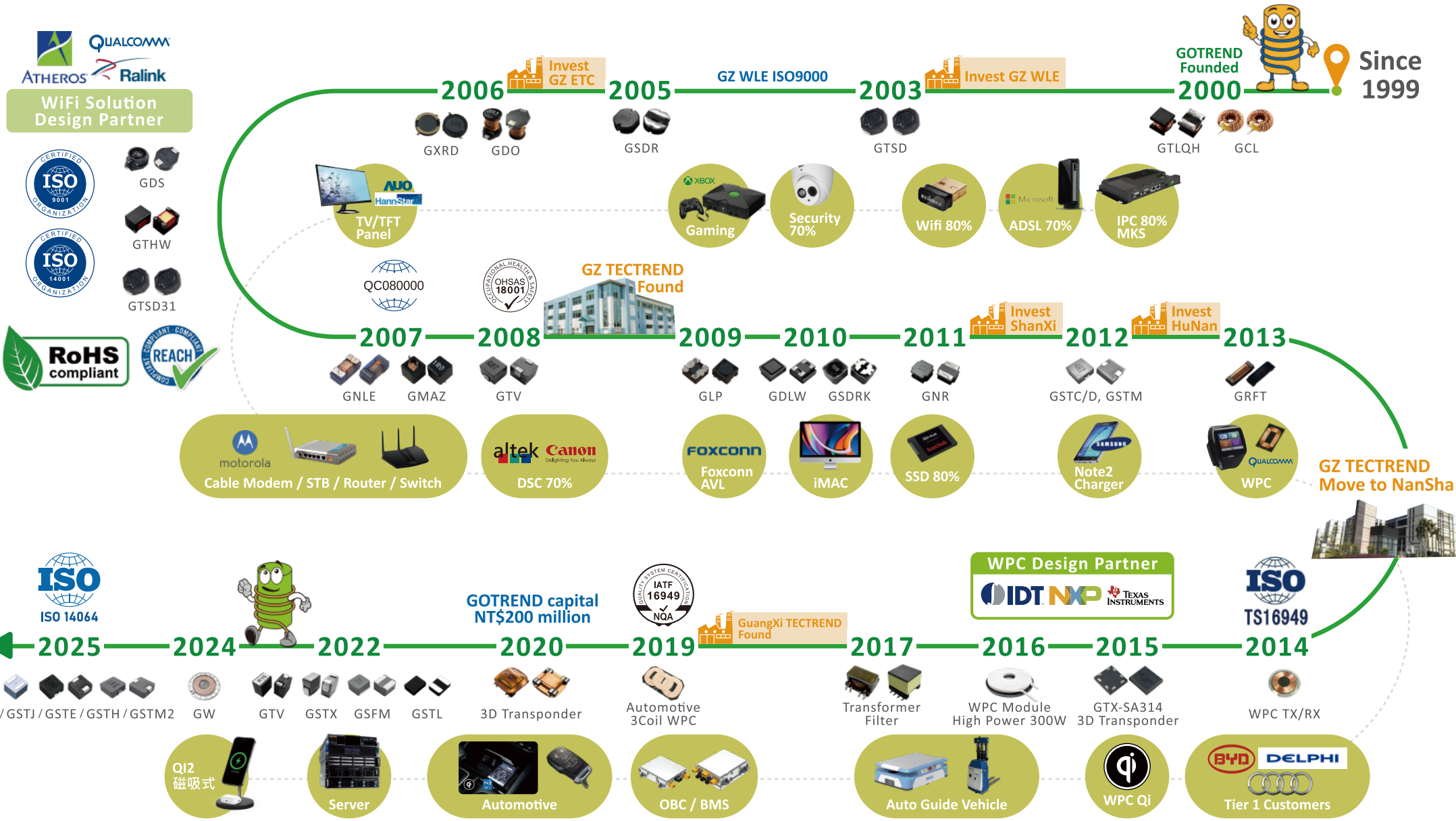
Suwanabhumii Canal Rd, Tambon Bang Pla, Bang Phli District, Samut Prakan 10540, Thailand

### Products Manufactured

- NR Series
- SMD Molding

# History

Go Trend. Go Further. Smarter





# GOTREND's Competitive Edge

## Diverse Client Base Across Various Industries

GOTREND boasts a diverse client base spanning multiple sectors, including **networking and communications, automotive, industrial control, medical, wireless charging, consumer electronics, and servers**. Over the past 24 years, we have achieved remarkable milestones, serving more than 2,000 clients worldwide. This underscores our extensive market influence and broad business reach.

## Customized Development with Flexible Services

GOTREND's exceptional engineering team delivers high-level **customized services**. With dedicated professional teams in both Taiwan and Mainland China, we ensure prompt and reliable support tailored to our clients' needs.

## Decentralized Production for Economic Efficiency

To optimize cost and material advantages, GOTREND strategically decentralizes production across different regions based on product categories. This approach not only ensures economies of scale **but also mitigates regional risks while enhancing production flexibility and efficiency**.

## Product Diversification with Competitive Alternatives

With a diversified product portfolio, GOTREND offers solutions that cater to various demands and serve as viable alternatives to industry-leading specifications. This provides our clients with more competitive **QCDS (Quality, Cost, Delivery, Service) options**.

## Stringent Quality Control to Meet Reliability Standards

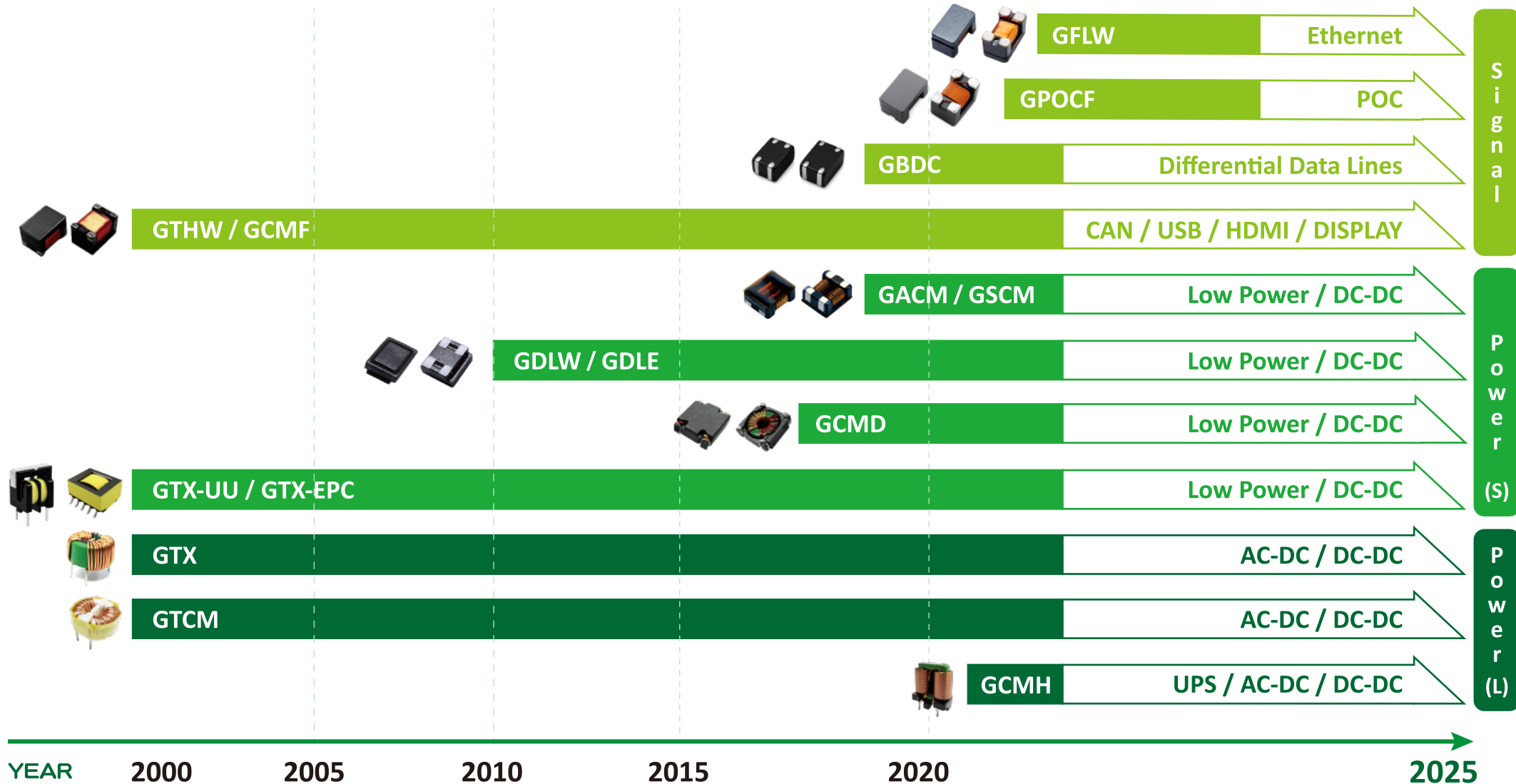
GOTREND serves numerous international automotive clients, ensuring both commercial and automotive-grade products undergo rigorous quality inspections. We maintain a **0 ppm** defect level, delivering superior quality products that meet stringent international standards.

## Ongoing Automation with a Focus on Social Responsibility

In response to the growing demand for automation, GOTREND remains one of the few Taiwanese companies willing to invest in the production of **custom winding products that require manual processes**. We provide clients with comprehensive one-stop shopping services while steadily advancing automation. Additionally, we actively expand our production lines and contribute to boosting local employment, demonstrating a strong commitment to corporate social responsibility.

# Product Evolution

Go Trend. Go Further. Smarter



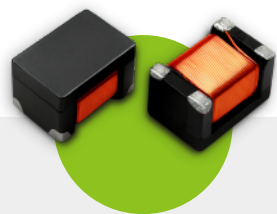
# Selection Guide - Signal

Go Trend. Go Further. Smarter

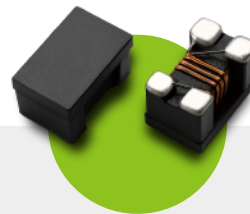
**Common Mode (CM) filters** play a critical role in power applications by suppressing asymmetric noise on data lines and other interfaces. GOTREND offers a wide range of product designs to meet diverse application requirements.



**GBDC**  
CM Filter / CMC



**GTHW**  
CM Filter / CMC



**GCMF**  
CM Filter / CMC



**GPOCF**  
CM Filter / CMC



**GFLW**  
CM Filter / CMC

## Features

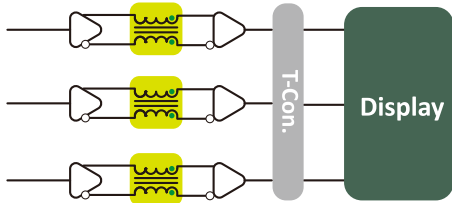
- Magnetically shielded low-loss ferrite drum core with industry-standard footprint.
- Low DCR for high efficiency and strong current handling.

## Applications

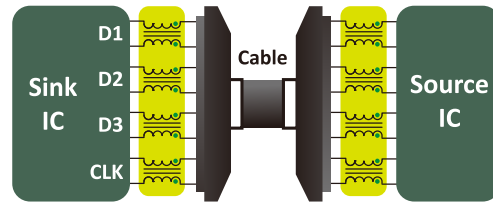
- Applicable to IT, PoC, IEEE systems.
- USB / DVI / HDMI interfaces
- Serial ATA and automotive high-speed differential signals

# Selection Guide - Signal

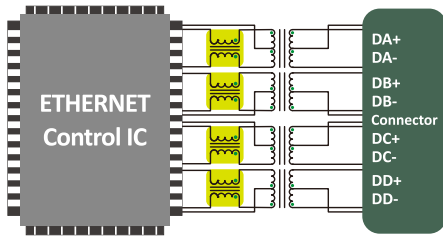
Go Trend. Go Further. Smarter



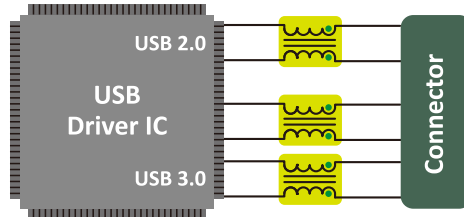
LVDS / MIPI / V-by-One / eDP



HDMI 1.4 / 2.0 / MHL 1.0 / 2.0



LAN ( 100 / 1000 Base-T )




USB 2.0 / USB 3.0

## Small Current Multilayer / Thin-Film Chip Common Mode Filter Series

### GBDC Series -

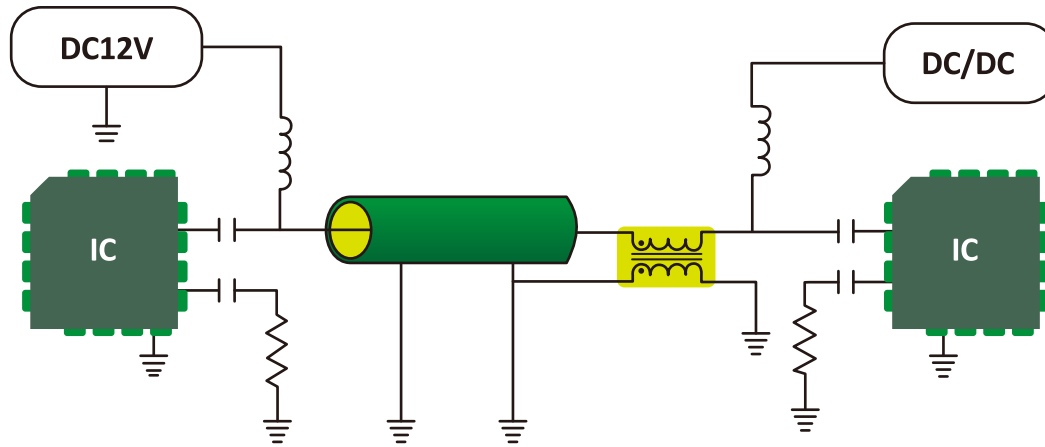
Effectively suppresses cable radiation caused by common-mode noise in digital equipment.

- Common mode filters with impedance matching for noise suppression without affecting high-speed signals.
- Compact low-profile design for space-limited applications.
- Suitable for high-speed differential signal lines.
- Used in PCs, notebooks, smartphones, monitors, and portable devices.

Part Number	Dimension (mm)	Inductance (μH)	Tolerance	Impedance (ohm)	Tolerance	DCR (ohm)	Isat (A)	Irms (A)	IDC (A)
	GBDC060503PT	0.65 x 0.5 x 0.3		9.0 x 90.0		2.8 ~ 5.2			0.1
	GBDC060503PM	0.65 x 0.5 x 0.3	-	12.0 x 90.0	Typ	1.6 ~ 4.0	-	-	0.05 ~ 0.15
	GBDC080604PT	0.85 x 0.65 x 0.4		12.0 x 90.0		1.7 ~ 4.0			0.1

# Selection Guide - Signal

Go Trend. Go Further. Smarter



## Low-voltage, small-current common mode filters

### GTHW / GCMF / GPOCF / GFLW Series -

Effectively suppresses cable radiation caused by common-mode noise in digital equipment.

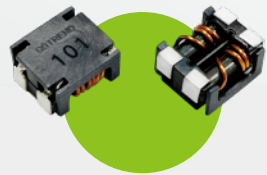
- Common mode filters for high-speed signal lines.
- USB / IEEE / HDMI / PoC applications.
- Helps meet CE/FCC standards.
- For mobile, handheld, slim, and coaxial power devices.

Part Number	Dimension (mm)	Inductance (μH)	Tolerance	Impedance (ohm)	Tolerance	DCR (ohm)	Isat (A)	Irms (A)	IDC (A)
	GTHW2012PC	2.0 x 1.2 x 1.2	-	67 ~ 360	± 25%	0.25 ~ 0.5	-	-	0.3 ~ 0.4
	GTHW3216PE	3.2 x 1.6 x 2.0	-	60 ~ 2,200	Typ	0.3 ~ 1.2	-	-	0.2 ~ 0.37
	GTHW3225PKL	3.2 x 2.5 x 2.2	51.0 ~ 100.0	30% ~ 50%		2,500 ~ 4,900	0.7 ~ 2.0	0.2	NA
	GCMF1210PN	1.2 x 1.0 x 0.9	-	25 ~ 90	Typ	0.3 ~ 0.5	-	-	0.28 ~ 0.3
	GCMF2012PU	2.0 x 1.2 x 1.2	-	65 ~ 90		0.25	-	-	0.3
	GCMF2012PH		-	65 ~ 90		-	-	-	
	GPOCF2012PH	2.0 x 1.2 x 1.2	-	200 ~ 390	± 25%	0.168 ~ 0.36	-	-	0.3 ~ 0.5
	GFLW2012P		-	800		0.88	-	-	0.3

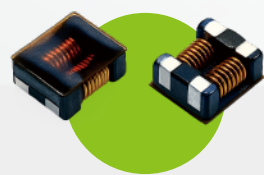
# Selection Guide - Power

Go Trend. Go Further. Smarter

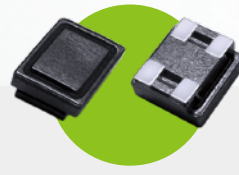
**EMC common mode filters** are essential for power applications, effectively suppressing common-mode noise on power lines and improving system EMC performance.



**GACM**  
CM Filter / CMC



**GSCM**  
CM Filter / CMC



**GDLW**  
CM Filter / CMC



**GDLE**  
CM Filter / CMC



**GCMD**  
CM Filter / CMC



**GCMH**  
CM Filter / CMC



**GTCM**  
CM Filter / CMC



**GTX**  
CM Filter / CMC

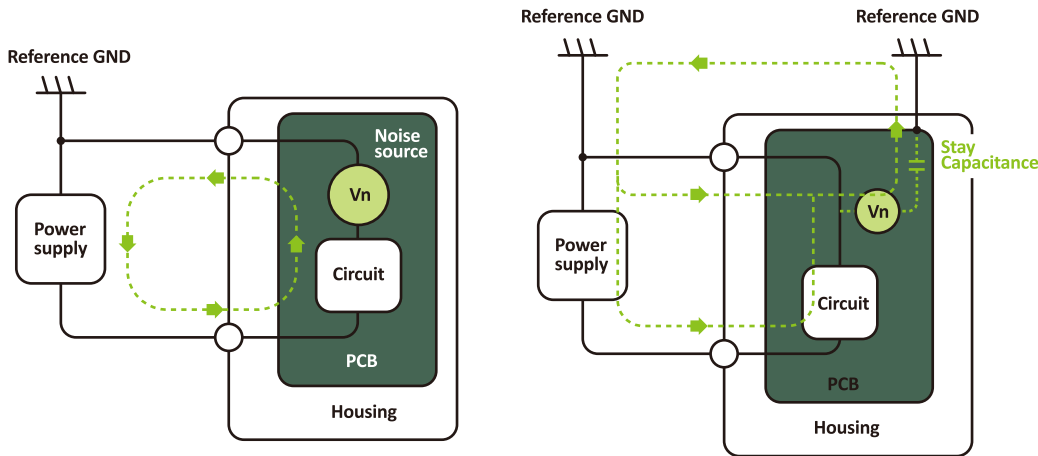


## Features

- Effectively reduces the impact of common-mode noise on circuits, especially interference from switching power supplies, motors, and transformers.
- Low DCR enables higher efficiency and excellent current handling performance.

## Applications

- Widely used in switching power supplies and transformers
- Input stage of power lines
- Common-mode noise on power lines



Differential (normal) mode noise

Common mode noise

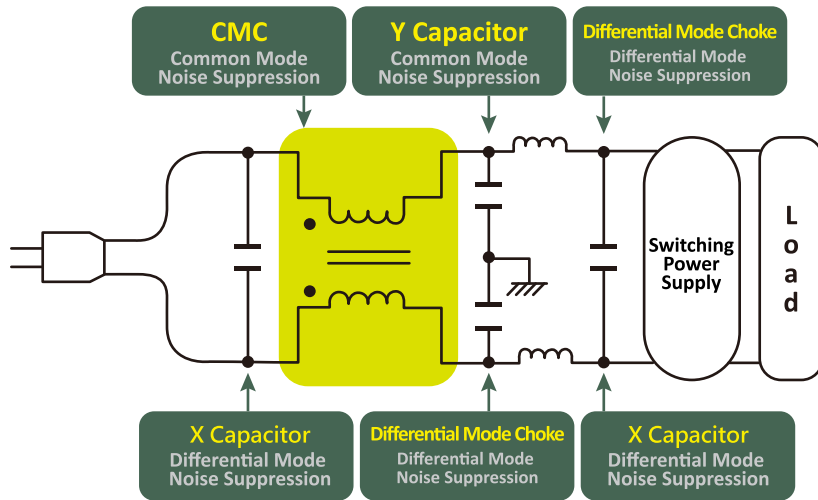
## Mn-Zn Toroidal Common Mode Choke

**GTCM series** is made of Fe-Mn-Zn high-permeability ferrite (5,000–15,000 $\mu$ ). Suitable for applications below 5MHz. Nickel-zinc ferrite is used for higher-frequency applications (2MHz to several hundred MHz).

- Widely used in EMC applications such as switching power supplies, transformers, and inductors.
- Excellent EMC performance with flexible customization options.
- Suitable for power line input/output.

Part Number	Dimension (mm)	Inductance ( $\mu$ H)	Tolerance	Impedance (ohm)	Tolerance	DCR (ohm)	Isat (A)	Irms (A)	IDC (A)
GTCM90503H	14.0 x 12.0 x 9.0	50 ~ 600	Min	-	-	15.0 ~ 100.0	-	-	0.55 ~ 2.2
GTCM90503HB	11.0 x 11.0 x 5.0					15.0 ~ 100.0			0.55 ~ 2.2
GTCM140905	19.0 x 19.0 x 9.5	400 ~ 7,750				15.0 ~ 350.0			0.6 ~ 4.0
GTCM161208	22.5 x 22.5 x 15.0	250 ~ 2,800				25.0 ~ 150.0			1.5 ~ 4.0
GTCM221408	30.0 x 30.0 x 16.0	1,300 ~ 6,000				25.0 ~ 120.0			2.2 ~ 6.0
GTCM251513	31.0 x 31.0 x 20.0	2,450 ~ 11,000				20.0 ~ 120.0			3.0 ~ 7.0
GTCM311913	39.0 x 39.0 x 21.0	2,350 ~ 16,000				15.5 ~ 80.0			4.0 ~ 12.0
GTCM362315	45.0 x 45.0 x 24.0	3,600 ~ 14,500				6.0 ~ 15.5			





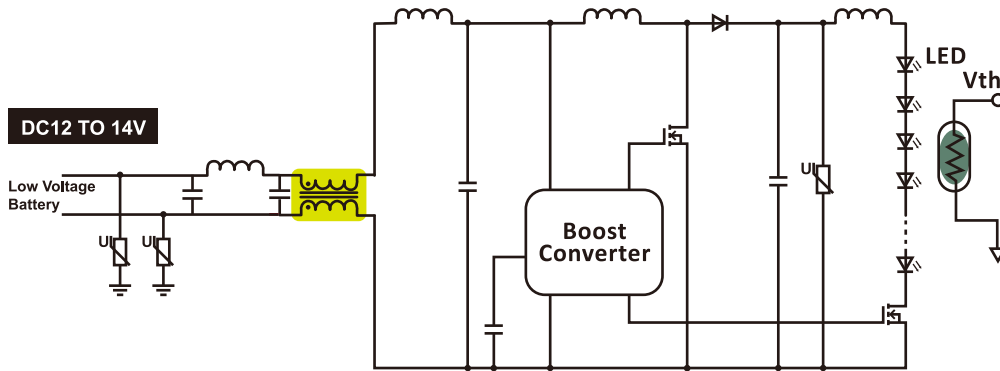
## Flat Wire Common Mode Choke

**GCMH Series** uses a closed magnetic path SQ core with high-permeability Mn-Zn ferrite. The flat wire design supports high-frequency and high-current applications, reduces DCR, and improves efficiency. Designed for automated production, it ensures stable quality and consistent performance.

- Switching power supplies / Industrial power systems
- Compact and high-precision power and signal line circuits
- Medical power supplies / LED drivers
- Office automation equipment / Consumer electronics / Home appliances

Part Number	Dimension (mm)	Inductance (μH)	Tolerance	Impedance (ohm)	Tolerance	DCR (ohm)	Isat (A)	Irms (A)	IDC (A)
GCMH1515PH	21.0 x 17.0 x 14.0	100 ~ 15,000	Min	-	-	250.0	-	-	1.0
GCMH1515PV	21.0 x 19.3 x 14.5	100 ~ 25,000							
GCMH1918PH	24.0 x 22.0 x 14.0	100 ~ 12,000							
GCMH1918PV	23.5 x 15.0 x 27.0								
GCMH2418PH	24.0 x 26.0 x 16.0					150.0			2.5
GCMH2418PV	24.0 x 16.0 x 31.5								
GCMH2820PV	28.0 x 17.0 x 38.0					100 ~ 7,000			
GCMH3131PH	35.0 x 35.0 x 19.0					200 ~ 8,000			50.0
GCMH3131PV	35.0 x 20.0 x 36.0								



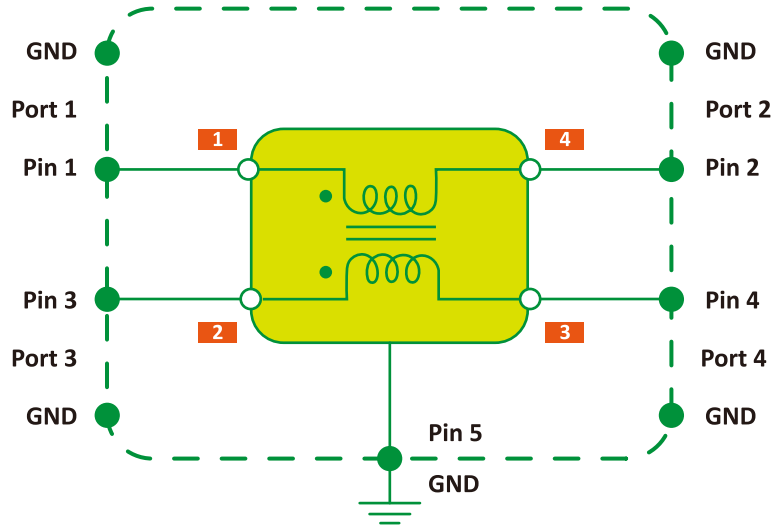


## SMD High-Current Common Mode Choke

**GSCM / GACM Series** are surface-mount common mode chokes for power line noise suppression. They offer high impedance in a compact size and support up to 10A current. Suitable for automotive, industrial, and DC power applications.

- Low-profile design for surface-mount applications
- High impedance, ideal for common mode noise suppression
- Suitable for DC power line noise filtering  
( ECU / Automotive multimedia / Electronic equipment )

Part Number	Dimension (mm)	Inductance (μH)	Tolerance	Impedance (ohm)	Tolerance	DCR (ohm)	Isat (A)	Irms (A)	IDC (A)	
	GSCM706035P	7.0 x 6.0 x 3.5	Min	100 ~ 2,500	Min	10.0 ~ 75.0	-	-	1.0 ~ 9.0	
	GSCM706038P	7.0 x 6.0 x 3.8		500 ~ 700		15.0			4.0	
	GSCM907045P	9.0 x 7.0 x 4.5		225 ~ 2,500		6.0 ~ 70.0			3.0 ~ 6.0	
	GSCM907048P	9.0 x 7.0 x 4.8		500 ~ 1,500		10.0 ~ 60.0			3.0 ~ 5.0	
	GSCM121160P	12.5 x 10.5 x 6.0		-		500 ~ 800			6.0 ~ 8.0	8.0 ~ 10.0
	GSCM121164P	12.0 x 10.8 x 6.4		-		800 ~ 2,000			16.5 ~ 18.5	4.0 ~ 5.0
	GACM706038P	7.0 x 6.0 x 3.8	Min	100 ~ 700	Min	6.2 ~ 20.0	-	-	3.0 ~ 9.0	
	GACM907048P	9.0 x 7.0 x 4.8		350 ~ 1,650		8.0 ~ 100.0			2.0 ~ 6.0	
	GACM121160P	12.5 x 10.5 x 6.0		100 ~ 800		3.5 ~ 12.0			5.0 ~ 10.0	

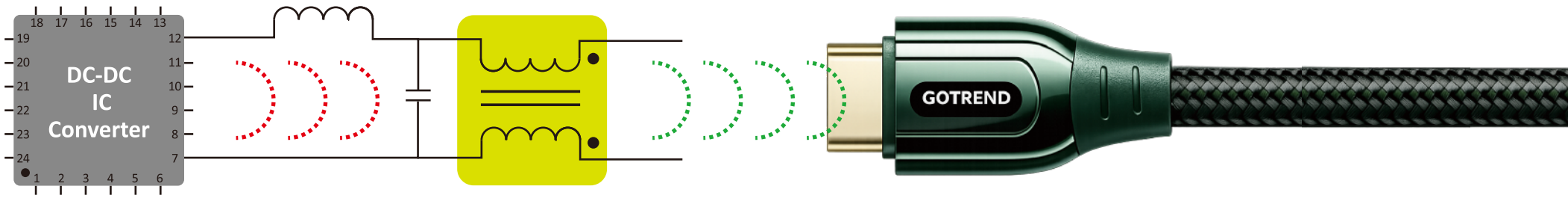


## SMD Low-Voltage Toroidal Common Mode Filter

**GCMD Series** features a low-profile, compact design for space-constrained applications while maintaining stable electrical performance. It provides high impedance for effective common mode noise and EMI suppression, improving overall system stability.

- Current-compensated chokes for data and signal lines
- Common mode noise suppression for power signal and sensor lines
- Buck/boost converter filtering
- Audio noise suppression

Part Number	Dimension (mm)	Inductance ( $\mu\text{H}$ )	Tolerance	Impedance (ohm)	Tolerance	DCR (ohm)	Isat (A)	Irms (A)	IDC (A)
	GCMD8035P	8.0 x 5.3 x 3.5	6 ~ 150	$\pm 40\%$		0.04 ~ 0.42			0.65 ~ 2.0
	GCMD8035P	8.0 x 5.3 x 3.5	150 ~ 2,000	50% / -30%	-	0.42 ~ 0.52	-	-	0.5 ~ 0.65
	GCMD1065P	10.0 x 8.7 x 6.5	250 ~ 30,000	$\pm 40\%$		0.035 ~ 1.55			0.26 ~ 2.0



## SMD Assembled & Shielded Common Mode Filter

**GDLW / GDLE Series** are SMD wire-wound common mode chokes with a shielded structure for enhanced EMI suppression. They effectively block external interference and ensure stable performance in complex environments.

- High-coupling common mode choke structure
- High impedance for effective noise suppression
- Suitable for mobile / handheld / slim devices / display panels

Part Number	Dimension (mm)	Inductance (μH)	Tolerance	Impedance (ohm)	Tolerance	DCR (ohm)	Isat (A)	Irms (A)	IDC (A)
	GDLE404015P	4.0 x 4.0 x 1.4		10 ~ 180	± 40%	0.016 ~ 0.12			1.1 ~ 3.1
	GDLE503625P	5.0 x 3.6 x 2.35		50 ~ 1,100	Typ	0.013 ~ 0.056			2.0 ~ 6.0
	GDLE503643P	5.0 x 3.6 x 4.3	-	-		4,000	3	-	-
	GDLW0502P	4.8 x 5.0 x 2.5		100 ~ 1,400		9.0 ~ 24.0			1.0 ~ 6.0
	GDLW0504P	4.8 x 5.0 x 4.8		250 ~ 1,000	14.0 ~ 16.0			4.5 ~ 5.0	

# Custom Product Categories

Go Trend. Go Further. Smarter

Ferrite	Lead Type	Appearance	Features			
			Core Performance	Insulation	Base & Pin Structure	Space Evaluation
MnZn	Separated DIP Vertical Horizontal No Base		<ul style="list-style-type: none"> <li>• High power, low frequency</li> <li>• High permeability, low temp rise Affected by ambient temperature</li> <li>• Bare core / epoxy coated</li> </ul>	<ul style="list-style-type: none"> <li>• UEW : 1000-2000V</li> <li>• PEW : 1000-2000V</li> </ul>	<ul style="list-style-type: none"> <li>• No base, flexible layout</li> <li>• Pin pitch tolerance variation</li> </ul>	<p><b>【 Large Space 】</b></p> <ul style="list-style-type: none"> <li>- Lower height</li> <li>- Better heat dissipation</li> <li>- Lower cost</li> </ul>
	Separated DIP Vertical Horizontal With Base				<ul style="list-style-type: none"> <li>• Base ensures pin pitch accuracy</li> <li>• Provides insulation space to prevent short circuit</li> </ul>	<p><b>【 Medium Space 】</b></p> <ul style="list-style-type: none"> <li>- No tooling required</li> <li>- Flexible design</li> <li>- Lower cost</li> </ul>
	Separated SMD Horizontal With Base		<ul style="list-style-type: none"> <li>• High power, low frequency</li> <li>• High permeability, low temp rise, Affected by ambient temperature</li> </ul>	<ul style="list-style-type: none"> <li>• UEW : 500-2000V</li> <li>• PEW : 500-2000V</li> </ul>	<ul style="list-style-type: none"> <li>• Base ensures pin pitch accuracy</li> <li>• Suitable for SMD automation</li> </ul>	<p><b>【 Small Space 】</b></p> <ul style="list-style-type: none"> <li>- Higher profile</li> <li>- Supports automated assembly</li> <li>- Higher productivity</li> </ul>
	Separated DIP Vertical Horizontal DIP Base				<ul style="list-style-type: none"> <li>• Base ensures pin pitch accuracy</li> <li>• Improved reliability</li> </ul>	<p><b>【 Small Space 】</b></p> <ul style="list-style-type: none"> <li>- Higher base height</li> <li>- Improved stability</li> </ul>

# Custom Product Categories

Go Trend. Go Further. Smarter

Ferrite	Lead Type	Appearance	Features			
			Core Performance	Insulation	Base & Pin Structure	Space Evaluation
MnZn	Bifilar Winding DIP Vertical Other			<ul style="list-style-type: none"> <li>Bifilar winding : smaller safety spacing, lower leakage, higher capacitance</li> <li>UEW : 500V</li> <li>PEW : 500-1,500V</li> <li>TIW : 1,500-3,000V</li> </ul>	<ul style="list-style-type: none"> <li>No base : high design flexibility</li> <li>Base ensures pin pitch accuracy</li> <li>Base improves product reliability</li> </ul>	<p><b>[ Large Space ]</b></p> <ul style="list-style-type: none"> <li>- Lower height (no base)</li> </ul> <p><b>[ Medium Space ]</b></p> <ul style="list-style-type: none"> <li>- Base height lower than base type</li> </ul> <p><b>[ Small Space ]</b></p> <ul style="list-style-type: none"> <li>- Higher base improves stability</li> </ul>
	SMD Vertical		<ul style="list-style-type: none"> <li>High power, low frequency</li> <li>High permeability, low temp rise. Affected by ambient temperature</li> </ul>	<ul style="list-style-type: none"> <li>PEW : 500-2,000V</li> </ul>	<ul style="list-style-type: none"> <li>Dedicated fixture controls winding and lead forming for accurate assembly</li> </ul>	<p><b>[ Large Space ]</b></p> <ul style="list-style-type: none"> <li>- No base, reduced height</li> </ul>
	Other SMD Horizontal CASE			<ul style="list-style-type: none"> <li>UEW : 500-2000V</li> <li>FIW : 3,000-7,000V</li> </ul>	<ul style="list-style-type: none"> <li>Plastic case reduces height</li> <li>Improves insulation and pin pitch accuracy</li> <li>Ensures reliable SMD assembly</li> </ul>	<p><b>[ Medium Space ]</b></p> <ul style="list-style-type: none"> <li>- Plastic housing: semi / fully enclosed</li> <li>Terminal type affects height and winding space</li> </ul>

# Custom Product Categories

Go Trend. Go Further. Smarter

Ferrite	Lead Type	Appearance	Features				
			Core Performance	Insulation	Base & Pin Structure	Space Evaluation	
NiZn	DIP Vertical Horizontal		<ul style="list-style-type: none"> <li>• Suitable for &gt;1 MHz high-frequency applications</li> <li>• Lower permeability, higher temperature rise</li> </ul>	<ul style="list-style-type: none"> <li>• UEW : 1000-2000V</li> <li>• PEW : 1000-2000V</li> </ul>	<ul style="list-style-type: none"> <li>• No base : high design flexibility</li> <li>• Base ensures pin pitch accuracy</li> </ul>	<p><b>[ Large Space ]</b></p> <ul style="list-style-type: none"> <li>- Lower height, reduced height</li> </ul> <p><b>[ Medium Space ]</b></p> <ul style="list-style-type: none"> <li>- Base height lower than base type</li> </ul>	
	DIP Vertical BASE		<ul style="list-style-type: none"> <li>• Stable performance, less affected by ambient temperature</li> </ul>		<ul style="list-style-type: none"> <li>• Base ensures reliable pin pitch control, Supports fine wire winding</li> </ul>	<p><b>[ Small Space ]</b></p> <ul style="list-style-type: none"> <li>- Higher base</li> <li>- improves stability and reliability</li> </ul>	
Nanocrystalline	DIP Horizontal		<ul style="list-style-type: none"> <li>• High permeability</li> <li>• High stability at elevated temperature, low loss</li> <li>• Brittle material: bare core / coated types available</li> </ul>		<ul style="list-style-type: none"> <li>• No base : flexible component placement</li> <li>• Pin pitch tolerance variation (reference)</li> </ul>	<p><b>[ Large Space ]</b></p> <ul style="list-style-type: none"> <li>- Lower height</li> <li>- better thermal performance</li> <li>- Lower cost</li> </ul>	
	DIP Vertical Horizontal FR4					<ul style="list-style-type: none"> <li>• Base ensures pin pitch accuracy</li> <li>• Provides insulation space to prevent short circuit</li> </ul>	<p><b>[ Medium Space ]</b></p> <ul style="list-style-type: none"> <li>- No tooling required, flexible design</li> </ul>
	DIP Vertical BASE					<ul style="list-style-type: none"> <li>• Base ensures reliable pin pitch control</li> <li>• Supports fine wire winding</li> </ul>	<p><b>[ Small Space ]</b></p> <ul style="list-style-type: none"> <li>- Higher base</li> <li>- improves stability and reliability</li> </ul>



COMMON MODE  
CHOKER

Go Trend. Go Further. Smarter

*Driving Innovation, Powering the Future*

Since 2000 | 25th Anniversary

**GOTREND Technology Co., Ltd.**

17F, No. 186, Jian 1st Rd., Zhonghe Dist., New Taipei City, Taiwan

TEL : 886-2-8227-1808  
FAX : 886-2-8227-1908  
Mail : [service@gotrend.com.tw](mailto:service@gotrend.com.tw)  
URL : [www.gotrend.com.tw](http://www.gotrend.com.tw)